

# INTRODUCING A REVOLUTIONARY INVENTION WHAT IS IT?



22 October 2012



**PRESENTING  
AN INTERNATIONAL  
AWARD-WINNING INVENTION**

**A REVOLUTIONARY TEECY™ STAINLESS-STEEL,  
AIRTIGHT CONTAINER WITH EIGHTEEN INNOVATIVE  
FEATURES FOR THE SAFE MANAGEMENT OF INFANT  
FORMULA POWDER AND FORMULA FEED PREPARATION  
[AND ALL POWDERED AND PARTICULATE BABY FOOD]**

**A UNIQUE TEECY™ BABY CARE PRODUCT  
FIRST AND ONLY IN THE WORLD**

**[www.teecy.com](http://www.teecy.com)**

A PATENTED TECHNOLOGY  
COPYRIGHT © 2012 TEECY INTERNATIONAL INC. ALL RIGHTS RESERVED



# SILVER AWARD WINNER INTERNATIONAL INVENTION COMPETITION ITEX 2012



22 October 2012

# **RATIONALE BEHIND THE INVENTION**

**BREAST FEEDING  
IS KNOWN TO BE BEST FOR INFANTS  
AND IT SHOULD ALWAYS BE ENCOURAGED**

**HOWEVER  
WHEN YOU DO NEED  
TO USE INFANT FORMULA  
IT MUST BE DONE WITH DUE CARE  
TO AVOID CAUSING HARM TO THE CHILD**

**HARMS OF UNDER-NOURISHMENT  
DEHYDRATION, BRAIN DAMAGE,  
KIDNEY DAMAGE AND DIABETES  
WHICH MAY ONLY SURFACE IN THE  
LATER YEARS OF A HARMED INFANT'S LIFE**

(THESE PROBLEMS ARE SET OUT IN SLIDES 8 TO 35)

**View Relevant Medical Research Findings In Slides 36 To 38**

# **RATIONALE BEHIND THE INVENTION**

**TO PERMANENTLY ELIMINATE  
THE MANY PERENNIAL PROBLEMS OF HYGIENE  
HEALTH AND PRACTICAL DIFFICULTIES FACED IN  
THE USE OF INFANT FORMULA**

(THESE PROBLEMS SET OUT IN SLIDES 8 TO 35)

**PROBLEMS WHICH HAVE BEEN TOLERATED WORLDWIDE  
FOR DECADES SINCE THE INTRODUCTION OF INFANT FORMULA  
IN WANT OF A SOLUTION**

**AND THERE HAD BEEN NO SOLUTION  
UNTIL THE ADVENT OF THIS TEECY™ INVENTION**

**ENDEAVOURED WITH MANY YEARS OF RESEARCH & DEVELOPMENT  
TO CULMINATE IN ITS STATE OF USEFUL SIMPLICITY  
PACKED WITH 18 INNOVATIVE FEATURES**

**AN INTERNATIONAL AWARD-WINNING INVENTION**

**FIRST AND ONLY IN THE WORLD**

# **SEQUENCE OF THIS PRESENTATION**

**THIS PRESENTATION IS MADE  
IN THE FOLLOWING SEQUENCE**

**SECTION I : SLIDE 6 TO 35**

**The Perennial Problems Faced  
In The Use of Infant Formula Powder**

**SECTION II : SLIDE 36 TO 39**

**Relevant Medical Research References  
On Related Harms Caused To Infants**

**SECTION III : SLIDE 40 TO 88**

**How This Invention Will  
Permanently Eliminate All The  
Problems With Its Innovative Features**

## **SECTION I**

**THE MANY PERENNIAL PROBLEMS  
FACED IN THE USE OF INFANT FORMULA**

**WHAT EXACTLY**

**ARE THE PROBLEMS?**

# **PROBLEM 1**

## **HARMS OF SERVING INFANT FORMULA FEEDS OF THE WRONG CONCENTRATION**

**FEEDS OF WRONG CONCENTRATIONS  
ARE VERY HARMFUL FOR INFANTS**

[SEE MEDICAL RESEARCH FINDINGS IN SLIDES 36 TO 39]

**IT IS CAUSED LARGELY BY  
INACCURATE POWDER MEASUREMENTS**

**DUE TO THE LACK OF EDUCATION  
ON CORRECT FEED PREPARATION**

**&**

**THE RISK OF SERVING FEEDS  
OF WRONG CONCENTRATIONS**

**THIS INVENTION PROVIDES THE EDUCATION  
AND MEANS TO HELP ELIMINATE THIS PROBLEM**



# **PROBLEM 1(A)**

**FEEDS SERVED MUST BE OF THE CORRECT  
CONCENTRATION PRESCRIBED BY MANUFACTURERS**

**IT IS VITAL**

**THAT FORMULA FEEDS SERVED  
ARE OF THE CORRECT CONCENTRATION  
AS PRESCRIBED BY THE MANUFACTURER**

**OTHERWISE IT WILL CAUSE  
VERY SERIOUS HARMS TO THE CHILD**

**SEE RELEVANT MEDICAL RESEARCH  
FINDINGS IN SLIDES 36 TO 39**

**PROBLEM 1(B)**  
**THE HARM OF SERVING DILUTED FEEDS**

**DILUTED FEEDS WILL LEAD TO  
MALNUTRITION  
SUSCEPTIBILITY TO ILLNESS  
AND PROLONGED RECOVERY**

**DILUTED FEEDS  
ARE MAINLY CAUSED BY NOT  
USING ENOUGH FORMULA POWDER  
DUE TO FAMILY ECONOMIC REASONS  
BEYOND THIS INVENTION TO REMEDY**

**SEE RELEVANT MEDICAL RESEARCH FINDINGS  
IN SLIDES 36 TO 39**

# **PROBLEM 1(C)**

## **THE RISKS OF SERVING OVER-CONCENTRATED FEEDS**

### **OVER-CONCENTRATED FEEDS WILL CAUSE THESE VERY SERIOUS HARMS TO INFANTS**

- 1. OVER-WORKING THE INFANT'S  
YOUNG AND TENDER KIDNEYS  
TO CAUSE KIDNEY DAMAGE**
- 2. DEHYDRATION**
- 3. BRAIN DAMAGE**
- 4. DIABETES**

**SEE RELEVANT MEDICAL RESEARCH FINDINGS  
IN SLIDES 36 TO 39 HEREIN**

# **PROBLEM 1(D)(i)**

## **MAIN CAUSES OF WRONG FEED CONCENTRATIONS**

- 1. USING WRONG WATER VOLUME**
  
- 2. POWDER QUANTITY USED IS NOT AS PRESCRIBED BY THE MANUFACTURER DUE TO:-**
  - (A) NOT USING SCOOP PROVIDED BY MANUFACTURER.**
  
  - (B) FAILURE TO LEVEL SCOOPFULS PROPERLY, SUCH AS KNOCKING SCOOPS ONTO INTERNAL WALLS OF CANS OR LEVELLING WITH FINGERS AND SPOONS. THESE METHODS WILL COMPACT THE POWDER INTO THE SCOOP, INCREASING THE AMOUNT OF POWDER USED AS A RESULT.**
  
  - (C) NOT LEVELLING SCOOPFULS AT ALL.**

CONTINUES IN NEXT SLIDE

# **PROBLEM 1(D)(II)**

## **MAIN CAUSES OF WRONG FEED CONCENTRATION**

(CONT'D)

**3. DELIBERATELY USING MORE POWDER THAN PRESCRIBED BY THE MANUFACTURER**

**4. MISTAKES IN SCOOP COUNTS**

**OFTEN DUE TO THE CONFUSION CAUSED BY THE JUGGLING PROCESS INHERENT IN LEVELLING SCOOPFULS WITH AN EXTERNAL LEVELLING UTENSIL, SUCH AS A KNIFE, ESPECIALLY AT NIGHT WHEN MOTHERS ARE EXHAUSTED AND SLEEPY**

**THIS INVENTION WILL CONTRIBUTE POSITIVELY TOWARDS EDUCATION ON PROPER FEED PREPARATION TO HELP REDUCE THIS SERIOUS PROBLEM, WORLDWIDE**



# **PROBLEM 1(E)**

**DELIBERATE USE OF MORE POWDER THAN PRESCRIBED  
ON THE MISGUIDED BELIEF THAT IT IS GOOD FOR THE CHILD**

**MOST DAMAGING OF ALL**

**PARENTS DELIBERATELY USING MORE POWDER  
THAN PRESCRIBED BY THE MANUFACTURER**

**ON THE MISGUIDED BELIEF  
THAT IT PROMOTES THE GROWTH  
AND HEALTH OF THEIR CHILDREN**

**NOT KNOWING  
THE SERIOUS HARMS  
THEY WILL CAUSE TO THE CHILD'S LIFE**

**SEE RELEVANT MEDICAL RESEARCH FINDINGS IN SLIDES 36 TO 39**

**THIS INVENTION WILL CONTRIBUTE POSITIVELY  
TOWARDS EDUCATION ON PROPER FEED PREPARATION  
TO HELP REDUCE THIS SERIOUS PROBLEM WORLDWIDE**

# **PROBLEM 1(F)**

## **PREPARING FEEDS OF CORRECT CONCENTRATION**

### **HOW TO PREPARE FEEDS OF THE CORRECT CONCENTRATION AS PRESCRIBED BY MANUFACTURERS**

#### **1. USE THE SCOOP PROVIDED BY THE FORMULA POWDER MANUFACTURER**

The particle size, density and composition of the formula powder produced by different manufacturers will differ. Hence the volume of the powder prescribed for a feed will not be the same.

#### **2. USE THE CORRECT NUMBER OF SCOOPS OF POWDER PRESCRIBED BY THE MANUFACTURER.**

#### **3. LEVEL EVERY SCOOPFUL OF POWDER PROPERLY.**

#### **4. USE THE PRESCRIBED WATER VOLUME.**

**SEE RELEVANT GUIDELINE ON SAFE FORMULA USAGE IN SLIDE 36**

## **PROBLEM 2**

**PROBLEMS CAUSED BY THE USE OF EXTERNAL  
SCOOP LEVELLING UTENSILS TO LEVEL SCOOPFULS**

**USING AN EXTERNAL SCOOP  
LEVELLING UTENSIL (SUCH AS A KNIFE) TO  
LEVEL SCOOPFULS IN FEED PREPARATION**

**INVOLVES AN INHERENT JUGGLING PROCESS  
WITH THE SCOOP, POWDER SCOOPING, USING THE  
LEVELLING UTENSIL TO LEVEL EACH SCOOPFUL AND  
THEN TRANSFERRING THE LEVELLED SCOOPFUL INTO  
THE FEEDING BOTTLE**

**THIS REPEATING JUGGLING PROCESS  
IS NEEDED FOR EVERY SCOOPFUL USED  
AND IT INVOLVES BOTH HANDS**

**THIS INVENTION ELIMINATES THE USE OF EXTERNAL LEVELLING  
UTENSILS AND RESOLVES THESE PROBLEMS PERMANENTLY**

## **PROBLEM 2(A)**

**LEVELLING SCOOPFULS WITH AN EXTERNAL LEVELLING UTENSIL IS A JUGGLING PROCESS BETWEEN THE POWDER, SCOOP, KNIFE AND THE FEEDING BOTTLE, INVOLVING BOTH HANDS.**



## **PROBLEM 2(B)**

**PROBLEMS FACED IN THE USE OF EXTERNAL  
SCOOP LEVELLING UTENSILS TO LEVEL SCOOPFULS**

**THIS LEVELLING PROCESS IS VERY  
TIME-CONSUMING AND INCONVENIENT  
CAUSING CONFUSION IN SCOOP COUNTS  
ENCOUNTERED IN EVERY FEED PREPARED  
DAY AND NIGHT**

**IT IS VERY PROBLEMATIC  
THERE IS ALSO A NEED TO CLEANSE,  
STERILISE AND KEEP KNIVES DRY & CLEAN  
ADDING TO THE WORKLOAD OF THE BUSY MOTHER**

**IT IS ALSO INCOVENIENT TO CARRY LEVELLING  
UTENSILS OUTDOOR AND KEEPING THEM CLEAN**

**THIS INVENTION ELIMINATES THE USE OF EXTERNAL LEVELLING  
UTENSILS AND RESOLVES THESE PROBLEMS PERMANENTLY**



# **PROBLEM 2(C)(i)**

## **THE PROBLEMS FACED IN THE USE OF EXTERNAL SCOOP LEVELLING UTENSILS**

### **USING EXTERNAL SCOOP LEVELLING UTENSILS PRESENTS THE FOLLOWING HYGIENE PROBLEMS**

#### **POWDER SPILLIAGE ONTO TABLE**

- 1, The powder-coated knife is left on the preparation table to free the hand for transferring each levelled scoop into the feeding bottle. Inevitably, powder on the knife will drop onto the table during this unavoidable juggling process.

#### **UNHYGIENIC ENVIRONMENT CREATED**

- 2, Formula powders are rich in nutrients. If the spillage is not cleaned up immediately, especially during the night, bacteria will flourish. An unhygienic environment is created. (Cont'd)

**THIS INVENTION ELIMINATES EXTERNAL LEVELLING UTENSILS  
ALTOGETHER AND RESOLVES THE PROBLEMS PERMANENTLY**

## **PROBLEM 2(C)(ii)**

### **THE PROBLEMS FACED IN THE USE OF EXTERNAL SCOOP LEVELLING UTENSILS (Cont'd)**

#### **USING EXTERNAL LEVELLING UTENSILS PRESENTS THE FOLLOWING PROBLEMS**

##### **SPILLAGE ATTRACTS VERMIN**

4. Ants, cockroaches and lizards will be attracted to the powder spillage and powder-coated knife left on the table, contaminating the table and the knife. They will disappear on sensing movements or when lights are switched on. Ants will crawl around and may try to get into the can.

##### **FEEDS THEN GET CONTAMINATED**

5. When the sleepy mother wakes up to prepare the next night feed, just imagine her re-using the contaminated knife left on the table to level scoops of powder. It contaminates the feed.

**THIS INVENTION ELIMINATES EXTERNAL LEVELLING UTENSILS  
ALTOGETHER AND RESOLVES THE PROBLEMS PERMANENTLY**

# **PROBLEM 3**

**THE PROBLEMS CAUSED BY THE PRACTICE  
OF STORING SCOOPS WITH THE POWDER IN THE CAN**

**SCOOPS  
ARE ALWAYS STORED  
WITH THE POWDER IN THE CAN**

**IT'S A  
TRADITIONAL PRACTICE WORLDWIDE  
AS THERE IS NOT A SMARTER WAY**

**THIS INVENTION PROVIDES THE SAFER AND NEATER WAY  
A LONG-AWAITED SOLUTION FOR THIS MAJOR PROBLEM**

## **PROBLEM 3(A)**

**THE PROBLEMS CAUSED BY THE PRACTICE  
OF STORING SCOOPS WITH THE POWDER IN THE CAN**

**SCOOPS KEPT WITH THE POWDER  
IN THE CAN INEVITABLY GET HEAVILY  
COATED WITH POWDER**

**POWDER GETS CAKED IN THE SCOOP  
TO REDUCE ITS MEASURING CAPACITY  
CAUSING WRONG POWDER MEASUREMENTS**

**ULTIMATELY LEADING  
TO WRONG FEED CONCENTRATION**

**THIS INVENTION ELIMINATES  
ALL THESE PROBLEMS PERMANENTLY**

## **PROBLEM 3(B)**

**THE PROBLEMS CAUSED BY THE PRACTICE  
OF STORING SCOOPS WITH THE POWDER IN THE CAN**

**POWDER-COATED SCOOPS ARE VERY STICKY  
UNPLEASANT AND IRRITATING TO HANDLE**

**THEY ARE  
HIGHLY CONTAMINATION PRONE  
AFFECTING THE WHOLE CAN OF POWDER  
WITH THE DAILY HANDLING**

**POWDER ON SCOOPS GETS TRANSFERRED  
ONTO HANDS AND THEN ONTO FEEDING  
BOTTLES CAUSING BOTTLES TO BE STICKY  
IT'S AN IRRITATION DURING FEED TIME**

**THIS INVENTION ELIMINATES  
ALL THESE PROBLEMS PERMANENTLY**

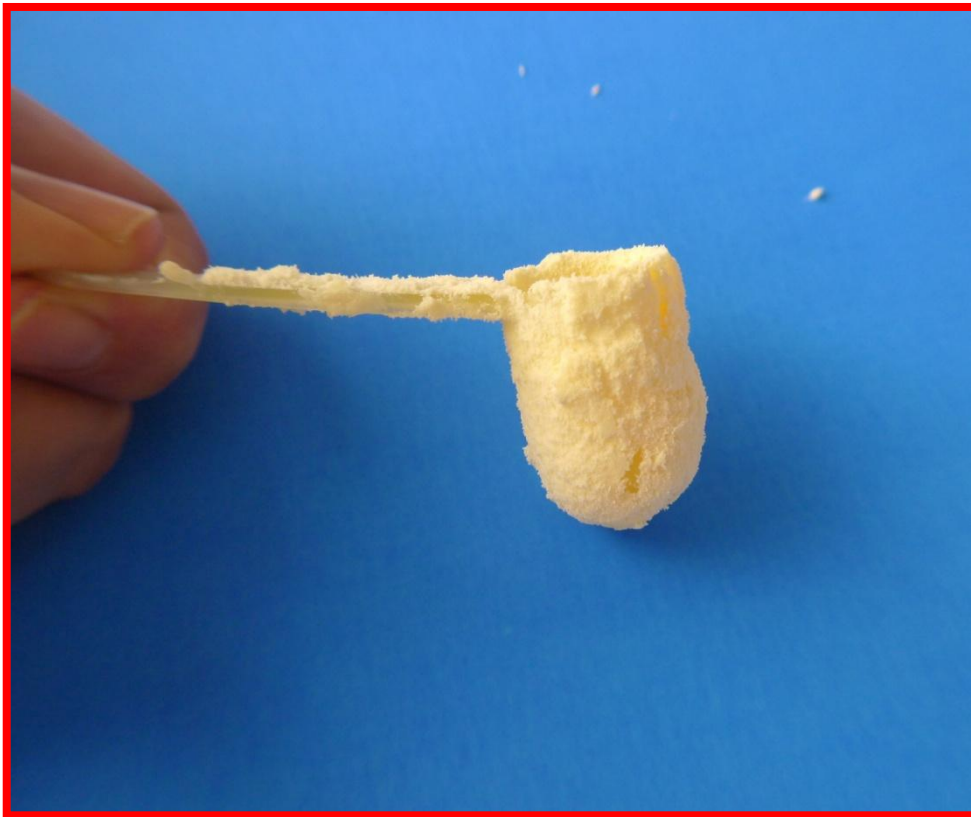


## **PROBLEM 3(C)**

**A SCOOP KEPT WITH THE POWDER IN THE  
CAN GETS HEAVILY COATED WITH POWDER**



**PROBLEM 3(D)**  
**HEAVY POWDER COATINGS**  
**GETS CAKED OUTSIDE AND INSIDE THE SCOOP**



## **PROBLEM 3(E)**

**THE SCOOP IS USUALLY NEVER EVER WASHED**

**THE POWDER-COATED SCOOP  
IS USUALLY NEVER EVER WASHED  
FROM INCEPTION OF USE**

**ONLY TO BE DISCARDED WITH THE CAN  
IT'S A SOURCE OF FEED CONTAMINATION**

**THE UNHYGIENIC AND UNPLEASANT  
HANDLING OF POWDER-COATED SCOOPS  
HAS BEEN TOLERATED FOR MANY DECADES  
IN WANT OF A SOLUTION**

**THIS INVENTION ELIMINATES THIS PROBLEM PERMANENTLY**

**PROBLEM 4**  
**SCOOPS GETTING BURIED IN THE POWDER**

**SCOOPS OFTEN GET  
BURIED IN THE CAN OF  
POWDER WHEN THE CAN IS  
MOVED AROUND INDOOR OR OUTDOOR**

**TO BE DUG OUT  
WITH THE BARE HANDS  
WHICH IS VERY UNHYGIENIC**

**CONTAMINATING  
THE WHOLE CAN OF POWDER  
TO BE CONSUMED BY THE CHILD**

**THIS INVENTION ELIMINATES THIS PROBLEM PERMANENTLY**

# **PROBLEM 5**

## **THE PROBLEMS OF PRE-MEASURING POWDER IN SMALL PLASTIC BOXES FOR OUTDOOR FEEDS**

### **THE COMMON PRACTICE OF PRE-MEASURING POWDER FOR OUTDOOR FEEDS IN SMALL PLASTIC BOXES HAS THESE INHERENT PROBLEMS**

- 1. It's difficult to determine number of feeds needed**
- 2. Powder gets damp in non-airtight plastic boxes**
- 3. Plastic smells leach into the powder, affecting taste**
- 4. Risk of plastic BPA poisoning, an international concern. It is not possible to physically ascertain if plastic boxes and containers are BPA Free.**
- 5. Even BPA-Free plastic boxes may leach worrisome chemicals into the formula powder. (CTV NEWS : SEPT 2012)**

**SEE RESEARCH FINDINGS ON PLASTIC POISONING IN SLIDE 39  
THIS INVENTION ELIMINATES THESE PROBLEMS PERMANENTLY**

# **PROBLEM 6**

**THE PROBLEM OF SMALL CAN OPENINGS  
HINDERING THE SCOOPING PROCESS**

**SOME FORMULA POWDER  
ARE PACKED IN SMALL CANS  
WITH SMALL OPENINGS WHICH  
HINDER THE SCOOPING PROCESS**

[ESPECIALLY POWDER FOR INFANTS BELOW SIX MONTHS]

**WITH NO ROOM TO  
MANOEUVRE THE HAND AND SCOOP  
ESPECIALLY IN THE LOWER PORTIONS  
AS THE FORMULA POWDER IS USED UP**

**THIS INVENTION ELIMINATES THIS PROBLEM PERMANENTLY**



**PROBLEM 6(A)**  
**HOW SMALL CAN OPENINGS**  
**HINDER THE SCOOPING PROCESS**





# **PROBLEM 7**

## **THE PROBLEM OF SHARP RIMS CUTTING HANDS**

**SOME CANS OPENINGS HAVE  
A LAYER OF ALUMINIUM FOIL  
COVERING WHICH HAS TO BE CUT OUT  
LEAVING A SHARP EDGE AROUND THE RIM  
THAT CAN CUT HANDS**

**BLOOD CAN ALSO DRIP  
INTO THE POWDER IN THE CAN**

**THIS INVENTION ELIMINATES THIS PROBLEM PERMANENTLY**

# **PROBLEM 7(A)**

## **HOW SHARP CAN RIMS CAN CUT HANDS**

**THESE SHARP RIMS CAN CUT HANDS**



**PROBLEM 8**  
**THE DIFFICULTY IN SCOOPING END-PORCTIONS**

**END-PORCTIONS IN CANS  
ARE DIFFICULT TO SCOOP DUE  
TO THE STRUCTURE OF THE CAN  
AND ARE USUALLY THROWN AWAY**

**THIS IS VERY WASTEFUL  
AS INFANT FORMULA IS NOT CHEAP**

**THIS INVENTION ELIMINATES THIS PROBLEM PERMANENTLY  
SAVING POWDER WASTAGE AND MONEY AS WELL**

## **PROBLEM 9**

**LACK OF AIR-TIGHTNESS IN CONTAINERS**

**NORMAL CONTAINERS LACK  
THE AIR-TIGHTNESS ESSENTIAL  
FOR FORMULA POWDER STORAGE**

**CAUSING THE POWDER  
TO GET DAMP AND CAKED  
AFFECTING QUALITY AND TASTE**

**THIS INVENTION ELIMINATES  
THESE PROBLEM PERMANENTLY**

# **PROBLEM 10**

**RISK OF LEACHING FROM PLASTIC CHEMICAL AND BPA**

**PARENTS ARE HELPLESS WITH  
THE PROBLEM OF CHEMICAL SMELL LEACHING  
FROM PLASTIC CONTAINERS INTO THE POWDER**

**WHEN PLASTIC CONTAINERS AND BOXES  
ARE USED FOR STORING FORMULA POWDER AND  
FOR PRE-MEASURED OUTDOOR POWDER NEEDS**

**EVEN BPA-FREE PLASTIC CONTAINERS MIGHT LEACH  
HARMFUL CHEMICALS INTO THE FORMULA POWDER**

**(SEE CANADIAN TV NEWS ON CHEMICAL LECHING IN BPA-FREE PLASTIC - SLIDE 39)**

**LEAVING THEIR INFANTS TO SUFFER THE  
AWFUL TASTE AND RISK OF PLASTIC CHEMICAL  
POISONING IN FEEDS DURING HIS ENTIRE INFANCY!**

**THIS INVENTION ELIMINATES THESE PROBLEMS PERMANENTLY**

## **SECTION II**

# **RELEVANT MEDICAL RESEARCH REFERENCES**

## **SAFE FORMULA POWDER USAGE GUIDANCE**

**SAFE PREPARATION, STORAGE AND HANDLING OF POWDERED INFANT FORMULA**  
Infant Nutritional Council, Australia and New Zealand.

**Website Link:**

<http://infantnutritioncouncil.com/safe-prep-and-handling/>

**(See Note No: 8 therein on the correct procedure for measuring formula powder).**

## **RELEVANT MEDICAL RESEARCH REFERENCES**

**The following are some relevant medical research references:-**

- 1. FORMULA FEED PREPARATION:  
HELPING REDUCE THE RISK; A SYSTEMATIC REVIEW**  
Prof. M J Renfrew, P Ansell, K L Macleod  
Archives of Disease in Childhood (Pubmed Central)  
**Website Link:**  
<http://www.ncbi.nlm.nih.gov/pmc/articles/PMC1719309/pdf/v088p00855.pdf>

# RELEVANT MEDICAL RESEARCH REFERENCES

## RELEVANT MEDICAL RESEARCH REFERENCES

### **2. CONCENTRATED FEEDS AND THEIR RELATIONSHIP TO HYPERNATRAEMIC DEHYDRATION IN INFANTS**

Timothy L. Chambers and A. E. Steel

British Medical Journal

Website Link:

<http://www.ncbi.nlm.nih.gov/pmc/articles/PMC1545494/pdf/archdisch00838-0042.pdf>

### **3. INFANT FEEDING PRACTICES**

R.K. Oates

British Medical Journal

Website Link:

<http://www.ncbi.nlm.nih.gov/pmc/articles/PMC1589837/pdf/brmedj01563-0046.pdf>

### **4. HYPERNATRAEMIA IN INFANTS AS A CAUSE OF BRAIN DAMAGE**

Duncan Macaulay and Marjorie Watson

Archives of Disease In Childhood (Pubmed Central)

Website Link:

<http://www.ncbi.nlm.nih.gov/pmc/articles/PMC2019800/pdf/archdisch01566-0031.pdf>



# WHO AND UN PUBLICATIONS

## WORLD HEALTH ORGANISATION AND UNITED NATIONS PUBLICATIONS.

### 1. **MANUAL ON FEEDING INFANTS AND YOUNG CHILDREN**

Margaret Cameron and Yngve Hofvander

Sponsored by the UN/ACC Sub-Committee on Nutrition

*Pg 78, Para 2: Contamination prevention and the need for good containers*

*Pg 79, Para 2: Care needed in safe feed preparation*

*Pg 100: Contamination and Feed Preparation*

*Pg 101, Para 4: Measuring scoops – scooping difficulties and difficulty in keeping correct scoop counts*

*Pg 101, Para 10: Danger of over-concentrated feeds*

### 2. **INTERNATIONAL CODE OF MARKETING OF BREAST-MILK SUBSTITUTES:** World Health Organisation, Geneva 1981.

*Ref: Para 9.2 on Pg. 20 re health hazards of inappropriate preparation*

Website Link:

<http://www.who.int/nutrition/publications/infantfeeding/9241541601/en/>

# **RESEARCH REFERENCES ON PLASTIC BPA POISONING**

## **RELEVANT RESEARCH REFERENCE ON BPA POISONING**

- 1. A SURVEY OF BISPHENOL A IN U.S. CANNED FOODS.  
March 2007.**

**Website Link:** <http://www.ewg.org/reports/bisphenola>

- 2. GUIDE TO INFANT FORMULA AND BABY BOTTLES**

**Website Link:** <http://www.ewg.org/reports/infantformula>

- 3. EVEN BPA-FREE BOTTLES MIGHT LEACH WORRISOME  
CHEMICALS (CANADIAN TV Network – 30<sup>TH</sup> SEPT 2012)**

**Website Link:**

<http://www.ctvnews.ca/health/even-bpa-free-bottles-might-leach-worrisome-chemicals-1.978033>

## **SECTION III**

**HOW THIS INVENTION WILL RESOLVE  
ALL THE PROBLEMS PERMANENTLY**

**THERE HAS BEEN NO SOLUTION  
TO ALL THE PROBLEMS FACED IN  
THE USE OF INFANT FORMULA SINCE  
IT WAS FIRST INTRODUCED TO THE WORLD  
FOR MANY DECADES NOW**

**THIS INVENTION BRINGS THE WORLD  
THE LONG-AWAITED SOLUTION**

**IT IS EXTREMELY SIMPLE  
EXCEPTIONALLY REVOLUTIONARY  
PACKED WITH 18 INNOVATIVE FEATURES**

**THE FIRST AND ONLY IN THE WORLD**

**WHAT ARE THE PROBLEMS  
RESOLVED BY THIS INVENTION ?**

**THIS INVENTION PROVIDES  
PERMANENT SOLUTIONS TO ALL  
THE PROBLEMS FACED IN THE USE OF  
INFANT FORMULA AS HIGHLIGHTED IN  
SECTION 1 : SLIDE 6 TO 35 HEREIN**

**FOR THE BENEFIT OF  
PARENTS AND CHILDREN  
AROUND THE WORLD**

**A FIRST IN HISTORY  
FIRST AND ONLY IN THE WORLD**

**HOW DOES THIS INVENTION WORK ?**

**HOW DOES THIS INVENTION  
PERMANENTLY RESOLVE ALL  
THE PERENNIAL PROBLEMS FACED IN  
THE USE OF INFANT FORMULA POWDER?**

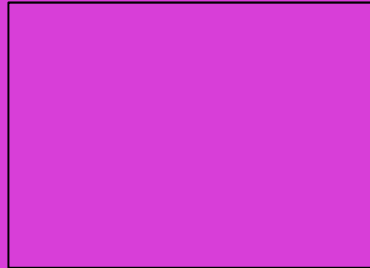
**WHEN NO SOLUTION  
HAD BEEN POSSIBLE AT ALL  
FOR SO MANY DECADES SINCE?**

# ILLUSTRATING SOME OF THE INNOVATIVE FEATURES OF THIS REVOLUTIONARY INVENTION

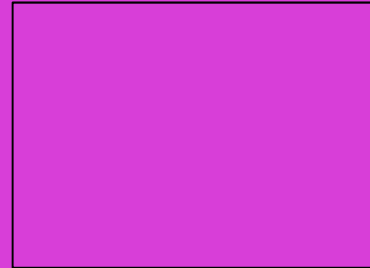
INTERNAL "BASE DRAIN" MAKES IT EASY TO SCOOP END-PORTIONS SAVING WASTAGE AND MONEY



SCOOP LEVELLING IS SWIFT ACCURATE AND EFFORTLESS DONE WITH JUST ONE HAND



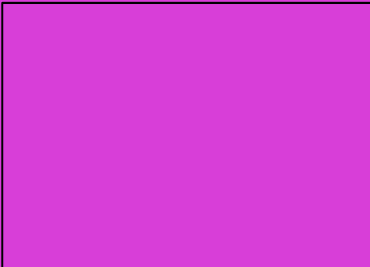
SCOOP IS ALWAYS STORED AWAY FROM THE POWDER. NO MORE POWDER COATED SCOOPS



THE SCOOP STORAGE FACILITY ACCOMMODATES SCOOPS OF DIFFERENT SIZES AND SHAPES



SEALED AIR-TIGHTNESS PROTECTS THE QUALITY AND SHELF LIFE OF ITS CONTENT



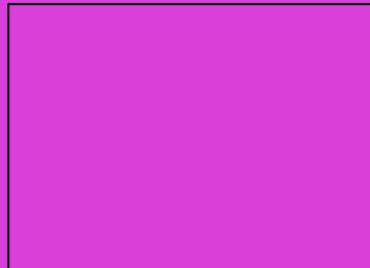
ALSO IDEAL FOR USE WITH REFILL PACKS WHICH ARE CHEAPER SAVING COST ON A LONG TERM



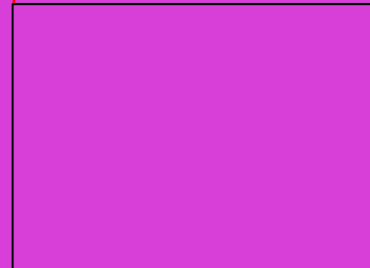
ALL THE PROBLEMS CAUSED BY POWDER-COATED SCOOPS NOW ELIMINATED ALTOGETHER



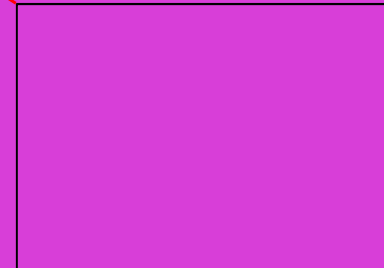
THE LOCK CAN BE OPERATED WITH JUST ONE HAND. WHEN RELEASED, COVER TILTS OPEN AUTOMATICALLY



NO MORE SMALL CAN OPENINGS HINDERING THE SCOOPING PROCESS AND CUTTING HANDS



NO MORE JUGGLING WITH KNIFE, SCOOP, POWDER AND FEEDING BOTTLE IN FEED PREPARATION





**A REVOLUTIONARY INVENTION  
FOR THE PROPER MANAGEMENT OF INFANT FORMULA POWDER  
RESOLVING HYGIENE, HEALTH AND PRACTICAL PROBLEMS TOLERATED FOR DECADES NOW**



SCOOP LEVELING IS SWIFT,  
ACCURATE AND EFFORTLESS  
DONE WITH JUST ONE HAND



THE SCOOP IS ALWAYS  
STORED AWAY FROM THE  
POWDER. NO MORE POWDER  
COATED SCOOP



THE SCOOP STORAGE  
FACILITY ACCOMMODATES  
SCOOPS OF DIFFERENT SIZES  
AND SHAPES



INTERNAL "BASE DRAIN" ALLOWS  
EASY SCOOPING OF END-PORTIONS  
SAVING WASTAGE AND MONEY



ALSO IDEAL FOR USE WITH  
REFILL PACKS WHICH ARE CHEAPER,  
SAVING COST ON LONG TERM



SEALED AIR-TIGHTNESS  
PROTECTS THE QUALITY AND  
SHELF LIFE OF ITS CONTENT



NO MORE JUGGLING  
WITH KNIFE, SCOOP, POWDER  
AND FEEDING BOTTLE  
IN FEED PREPARATION



ALL THE PROBLEMS CAUSED  
BY POWDER-COATED SCOOPS  
NOW ELIMINATED ALTOGETHER



THE LOCK IS OPERATED  
WITH JUST ONE HAND. WHEN  
RELEASED, THE COVER TILTS  
OPEN AUTOMATICALLY



NO MORE SMALL CAN  
OPENINGS HINDERING THE  
SCOOPING PROCESS AND SHARP  
RIMS CUTTING HANDS



**FOR THE BENEFIT OF MOTHERS AND THEIR CHILDREN WORLDWIDE  
FIRST IN THE WORLD**



**INVENTION FEATURE 1**  
**THE UNIQUE SCOOP STORAGE FACILITY**

**THIS INVENTION PRESENTS  
A VERY UNIQUE AND INNOVATIVE  
SCOOP STORAGE FACILITY**

**WHICH  
PERMANENTLY ELIMINATES  
ALL THE PROBLEMS CAUSED BY  
THE TRADITIONAL PRACTICE OF STORING  
THE SCOOP WITH THE POWDER IN THE CAN**

**BRINGING THE WORLD  
A LONG-AWAITED SOLUTION  
FOR THE FIRST TIME IN HISTORY**

# **INVENTION FEATURE 1(A)**

**THE UNIQUE SCOOP STORAGE FACILITY**

**THE SCOOP STORAGE FACILITY  
IN THE FORM OF A STORAGE PLATFORM  
STORES THE SCOOP NEATLY AND  
SECURELY WITHIN THE CONTAINER**

**YET**

**KEEPING THE SCOOP  
PERMANENTLY OUT OF CONTACT  
WITH THE POWDER THEREIN**

# **INVENTION FEATURE 1(B)**

## **THE UNIQUE SCOOP STORAGE FACILITY**

**The Scoop Is Stored Neatly And Securely On A Scoop Storage Platform Within The Container And Yet Keeping It Permanently Out Of Contact With The Powder**



# **INVENTION FEATURE 1(C)**

## **BENEFITS OF THE SCOOP STORAGE FACILITY**

**THE SCOOP STORAGE PLATFORM  
ELIMINATES ALL THE PROBLEMS CAUSED BY  
POWDER-COATED SCOOPS, SCOOPS BURIED IN  
POWDER AND RELATED CONTAMINATION RISKS  
IN KEEPING SCOOPS ON THE POWDER IN THE CAN**

**NO MORE  
HANDLING OF MESSY POWER-COATED SCOOPS**

**NO MORE  
DIGGING FOR SCOOPS BURIED IN POWDER**

**NO MORE  
CROSS-CONTAMINATION FROM COATED SCOOPS**

**CHILDREN'S FEEDS ARE MADE SAFER  
LIFE IS MADE MUCH MORE PLEASANT**

# INVENTION FEATURE 1(D) THE SCOOP STORAGE FACILITY

## The Custom-Designed Structure Of The Scoop Storage Facility Within The Container

### FEATURES OF THE SCOOP STORAGE PLATFORM



# **INVENTION FEATURE 1(E)**

## **HOW THE SCOOP STORAGE PLATFORM WORKS**

**The Scoop Is Anchored In Place  
On The Platform By A Custom-Designed  
Clip System Located On A Longitudinal Groove**

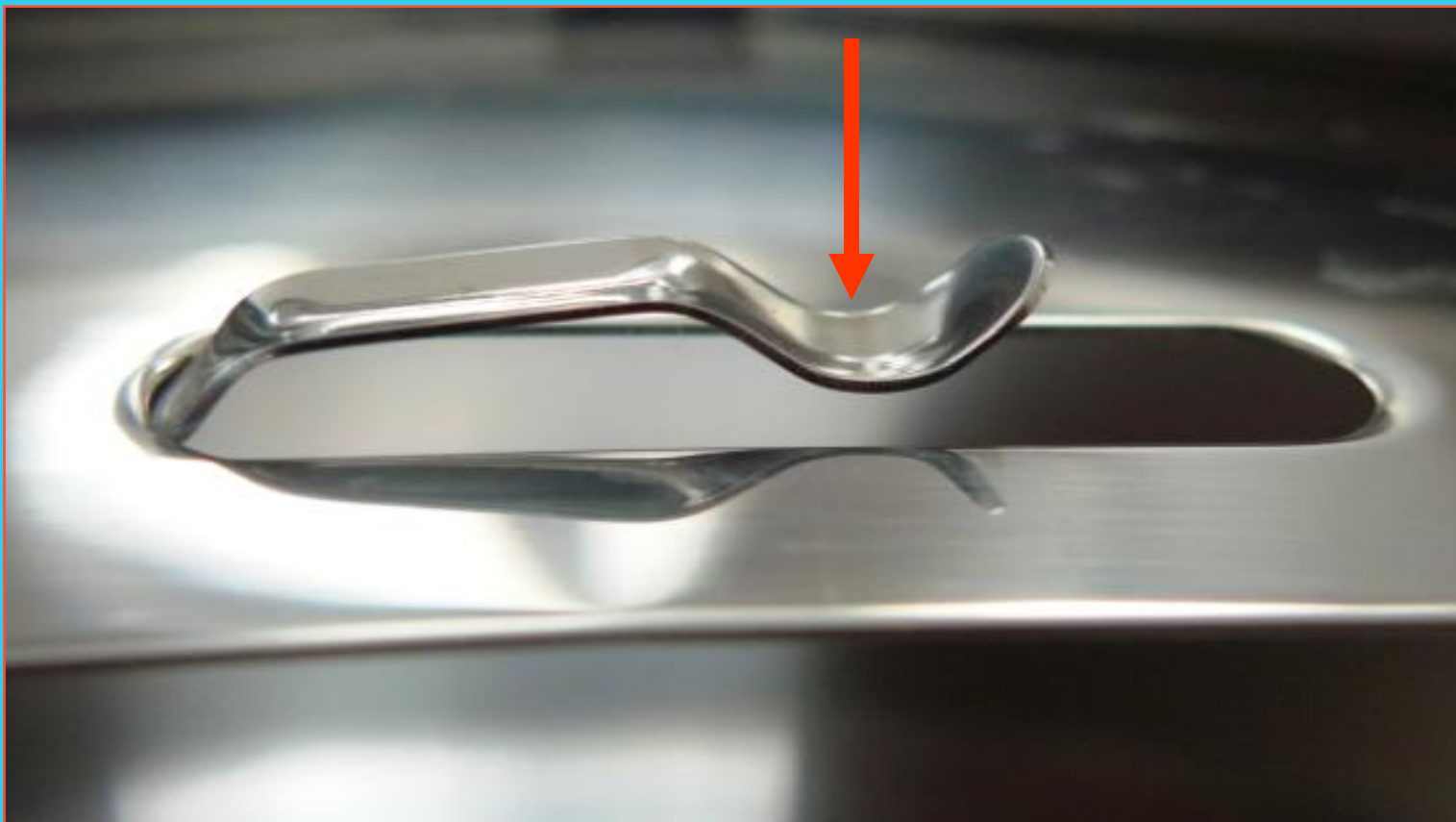


# **INVENTION FEATURE 1(F)**

## **THE MECHANICS OF THE CLIP**

### **ON THE SCOOP STORAGE PLATFORM**

**Should The Grip Of The Clip Loosen  
With Use, It Can Be Easily Re-Adjusted By  
Lightly Pressing It Downwards Into The Groove**





# **INVENTION FEATURE 1(G)**

**THE PLATFORM DESIGN ALLOWS THE SCOOP  
TO ROTATE ON IT WHEN THE SLIGHTEST PRESSURE  
IS EXERTED ONTO ITS HANDLE BY THE CLOSING COVER**

**THE HANDLE OF THE SCOOP  
WILL NOT OBSTRUCT THE CLOSING OF THE COVER**

**Illustration To Show The Rotation Of The Scoop  
Concurrently With The Downwards Movement Of The  
Handle When Pressure Is Exerted On It By A Closing Cover.  
The Clip and Longitudinal Groove Will Not Scrape The Scoop**



# INVENTION FEATURE 2

THE SCOOP STORAGE PLATFORM ACCEPTS SCOOPS OF DIFFERENT SIZES AND SHAPES



# **INVENTION FEATURE 2(A)**

## **HOW DIFFERENT SCOOPS ARE STORED ON THE SCOOP STORAGE PLATFORM**



# **INVENTION FEATURE 3**

**ANY BRAND OF FORMULA POWDER CAN BE  
USED WITH THE CONTAINER OF THIS INVENTION**

**ANY BRAND  
OF INFANT FORMULA  
CAN BE USED WITH THIS INVENTION**

**AS THERE IS NO  
STORAGE RESTRICTIONS  
ON SCOOP SIZE & SHAPE**



# **INVENTION FEATURE 4**

## **THE SCOOP LEVELLING FACILITY**

**A SCOOP LEVELLING FACILITY  
IN THE FORM OF A LEVELLING EDGE  
ON THE SCOOP STORAGE PLATFORM  
ALLOWS A SCOOPFUL TO BE LEVELLED  
ACCURATELY, SWIFTLY AND EFFORTLESSLY  
WITH JUST ONE HAND**

**WITHOUT  
A NEED TO USE ANY  
EXTERNAL SCOOP LEVELLING UTENSIL**

**THE LEVELLING EDGE IS SMOOTH  
AND IT WILL NOT SCRAPE THE SCOOP**

# **INVENTION FEATURE 4(A)**

## **HOW THE SCOOP LEVELLING SYSTEM WORKS**

### **LEVELLING A SCOOPFUL – STEP 1**

**A GENEROUS SCOOPFUL OF POWDER IS TAKEN**



# **INVENTION FEATURE 4(B)**

## **HOW THE SCOOP LEVELLING SYSTEM WORKS**

### **LEVELLING A SCOOPFUL – STEP 2**

#### **THE SCOOPFUL IS LIFTED UNDER THE PLATFORM**





# **INVENTION FEATURE 4(C)**

## **HOW THE SCOOP LEVELLING SYSTEM WORKS**

### **LEVELLING A SCOOPFUL – STEP 3**

**THE SCOOPFUL IS WITHDRAWN FROM UNDER THE PLATFORM**



# **INVENTION FEATURE 4(D)**

## **HOW THE SCOOP LEVELLING SYSTEM WORKS**

### **LEVELLING A SCOOPFUL - STEP 4**

**A LEVELLED SCOOPFUL IS ACHIEVED ACCURATELY  
SWIFTLY AND EFFORTLESSLY WITH JUST ONE HAND  
WITHOUT A NEED TO USE ANY EXTERNAL LEVELLING UTENSIL**





**UNHYGIENIC HANDLING**



**THE HYGIENIC WAY**



**THE CORRECT WAY  
OF STORING THE SCOOP  
AND  
PROPER FORMULA POWDER MEASUREMENT**

# **INVENTION FEATURE 5**

## **THE SCOOP LEVELLING FACILITY SHORTENS FEED PREPARATION TIME SIGNIFICANTLY**

**FEEDS ARE PREPARED IN A JIFFY  
IN A FRACTION OF THE TIME NORMALLY TAKEN  
WITH AN WITH AN EXTERNAL SCOOP LEVELLING UTENSIL**

**NIGHT FEEDS ARE SWIFTLY PREPARED**

**NO MORE CONFUSING JUGGLING  
WITH FEED PREPARATION UTENSILS  
HENCE ELIMINATING WRONG SCOOP COUNTS**

**THE DAILY TASK OF  
PREPARING FORMULA FEEDS  
IS LIGHTENED VERY SIGNIFICANTLY**

**THIS INVENTION ELIMINATES THE HASSLE  
FACED IN FORMULA FEED PREPARATION  
REDUCING THE TIME TAKEN SIGNIFICANTLY**

# **INVENTION FEATURE 5(A)**

## **BENEFITS OF THE SCOOP LEVELLING FACILITY**

### **THE SCOOP LEVELLING FACILITY ELIMINATES THE FOLLOWING PROBLEMS**

**NO MORE  
POWDER SPILLAGE FROM KNIVES  
TO CONTAMINATE FEED PREPARATION TABLE**

**NO MORE  
SPILLED POWDER ON TABLE TO ATTRACT  
VERMIN (ANTS, COCKROACHES AND LIZARDS)**

**NO MORE  
A NEED TO WASH, STERILISE AND TEND  
TO EXTERNAL SCOOP LEVELLING UTENSILS  
IMPROVING THE QUALITY OF LIFE**



# **INVENTION FEATURE 6**

**A “BASE DRAIN” FOR SCOOPING END-PORCTIONS**

**AN INTERNAL “BASE DRAIN”  
IS DESIGNED FOR EASY SCOOPING  
OF END-PORCTIONS**

**END-PORCTIONS ARE HARD TO SCOOP  
DUE TO THE STRUCTURE OF A NORMAL CAN  
AND ARE USUALLY THROWN AWAY**

**THIS WASTAGE IS NOW EASILY SAVED  
FORMULA POWDER IS NOT CHEAP**

**THIS INVENTION ELIMINATES  
POWDER WASTAGE AND SAVES MONEY**

# **INVENTION FEATURE 6(A)**

## **THE "BASE DRAIN" IS DESIGNED TO FIT THE CURVATURE OF A SCOOP**

SCOOPING END-PORCTIONS FROM THE "BASE DRAIN"



The "Base Drain" is designed to fit the curvature of a scoop.



End-Portions Are Scooped Out Conveniently



# **INVENTION FEATURE 7**

## **THE CUSTOM-DESIGNED ONE-HAND LOCK SYSTEM**

**THE CUSTOM-DESIGNED LOCK  
ALLOWS OPENING AND LOCKING OF  
THE CONTAINER WITH JUST ONE HAND**

**ON UNLOCKING  
THE COVER WILL TILT OPEN  
AUTOMATICALLY TO FACILITATE  
FULL OPENING WITH ONLY ONE HAND**

# **INVENTION FEATURE 7(A)**

**THE CUSTOM-DESIGNED LOCK  
NEEDS JUST ONE HAND TO OPERATE**



**INVENTION FEATURE 7(B)**  
**THE CUSTOM-DESIGNED LOCK**  
**NEEDS JUST ONE HAND TO OPERATE**

**THE COVER AUTOMATICALLY TILTS OPEN**  
**AUTOMATICALLY WHEN THE LOCK IS RELEASED**  
**FOR EASY FULL OPENING. ALL WITH JUST ONE HAND**



# **INVENTION FEATURE 8**

**FEEDS CAN BE PREPARED WITH JUST ONE HAND**

**FORMULA FEEDS CAN NOW BE  
PREPARED WITH JUST ONE HAND**

**AS THE INVENTION IS DESIGNED WITH  
THESE EASY ONE-HAND OPERATING FACILITIES:**

**LEVELLING OF SCOOPFULS**

**STORING AND REMOVING SCOOPS  
FROM THE SCOOP STORAGE PLATFORM**

**OPENING AND LOCKING THE CONTAINER**

**THIS INVENTION MAKES IT POSSIBLE  
TO PREPARE FORMULA FEEDS WITH JUST ONE HAND !**

**INVENTION FEATURE 8(A)  
FEEDS CAN EVEN BE PREPARED  
WITH THE BABY IN ONE HAND TOO!**

**NOW  
FEEDS CAN EVEN BE PREPARED  
WITH THE BABY IN ONE HAND!**

**WHICH IS VERY  
HELPFUL WHEN A HUNGRY BABY IS  
CRYING FOR A FEED AND THE ANXIOUS  
MOTHER NEEDS TO COMFORT THE CHILD  
WHILST PREPARING THE FEED**

**THIS INVENTION BRINGS COMFORT TO BABIES**

# INVENTION FEATURE 8(B) THE ONE-HAND OPERATING SYSTEM

THESE INVENTION FEATURES NOW MAKE IT POSSIBLE FOR A FEED TO BE PREPARED WITH JUST ONE HAND



The custom-designed lock allows the container to be easily opened and closed with just one hand.



The cover will automatically tilt open when the lock is released, allowing the full opening with just one hand



Every scoopful of powder is now easily levelled with just one hand, without using any external scoop-levelling aid

**NOW MOTHERS CAN EVEN PREPARE A FEED WITH THE BABY IN ONE HAND !**



**INVENTION FEATURE 9**  
**AN EFFICIENT AND AIR-TIGHT CONTAINER**

**THE CONTAINER OF THIS  
INVENTION IS AN EFFICIENT  
AND AIR-TIGHT SYSTEM**

**IT PROTECTS THE  
CONTENT QUALITY AND TASTE  
WITH NO RISK OF BPA POISONING OR  
PLASTIC CHEMICALS LEACHING INTO POWDER**

**THIS INVENTION ELIMINATES RELIANCE ON  
PLASTIC CONTAINERS WITH POOR STORAGE EFFICIENCY,  
RISK OF BPA POISONING AND PLASTIC CHEMICAL LEACHING**



**INVENTION FEATURE 9(A)**  
**IT IS ALSO IDEAL FOR REFILL PACKS**

**THIS INVENTION**  
**IS ALSO IDEAL FOR THE USE**  
**OF REFILL PACKS**

**USING REFILL PACKS IS**  
**ALWAYS FACED WITH PROBLEMS**  
**OF STORAGE AIR-TIGHTNESS**

**OFTEN HAVING TO USE UNSAFE**  
**PLASTIC WARES WITH THE RISK OF BPA**  
**CHEMICAL POISONING OR RE-USING METAL**  
**CONTAINERS WHICH TURN RUSTY QUICKLY**

**THIS INVENTION PROVIDES AIRTIGHT STORAGE**  
**WHICH IS ALSO IDEAL FOR USING REFILL PACKS**

**INVENTION FEATURE 9(B)**  
**THIS INVENTION CAN HELP SAVE MONEY**

**REFILL PACKS ARE  
USUALLY CHEAPER AS THEY  
ARE NOT PACKED IN COSTLY CANS**

**THIS INVENTION WILL HELP  
SAVE COST ON A LONG TERM**

**INVENTION FEATURE 10**  
**ITS APPROPRIATELY- WIDE OPENING**

**THIS INVENTION  
IS DESIGNED WITH AN  
APPROPRIATELY- WIDE OPENING  
TO FACILITATE EASY**

**POWDER REFILLING  
SCOOPING OF POWDER  
LEVELLING OF SCOOPFULS  
SCOOPING OF END PORTIONS  
CLEANSING AND STERILISING  
EASY WASHING IN DISH WASHER**

**THE EFFICIENCY OF THIS INVENTION  
IMPROVES THE QUALITY OF LIFE**

# **INVENTION FEATURE 10(A)**

## **THE APPROPRIATELY-WIDE OPENING**

THE APPROPRIATELY-WIDE OPENING OF THE CONTAINER



The diameter of the container opening is designed to be appropriately wide to facilitate refilling of the container and the scooping and levelling processes

**INVENTION FEATURE 11**  
**IT IS A VERY SAFE BABY PRODUCT**

**THIS INVENTION**  
**IS VERY SAFE**

**MADE OF HIGH QUALITY STAINLESS STEEL**  
**OF INTERNATIONAL STANDARD (GRADE 304)**

**ITS SILICONE LINING IS OF EUROPEAN LFGB**  
**AND USFDA STANDARDS WITH A TEMPERATURE**  
**TOLERANCE OF +200°C.**

**THE SILICONE LINING CAN BE REMOVED FOR**  
**CLEANSING AND STERILISING IN BOILING WATER**  
**IT IS ALSO DISHWASHER PROOF**

**THERE IS NO RISK OF BPA POISONING**  
**OR PLASTIC CHEMICALS LEACHING**  
**INTO THE POWDER**

# **INVENTION FETURE 12**

**THERE ARE NO SHARP EDGES TO CUT HANDS**

**THERE ARE NO SHARP EDGES  
IN THE CONTAINER TO CUT HANDS**

**DESIGNED TO BE SAFE  
FOR ALL USERS**

# **INVENTION FEATURE 13**

**OUTDOOR FEED PREPARATION MADE HASSLE-FREE AND SAFE**

**THE MINI OUTDOOR/TRAVEL UNIT  
WITH A HOLDING CAPACITY OF 400 GM  
MEETS OUTDOOR/TRAVEL NEEDS FOR A FEW DAYS**

**FEEDS CAN BE EASILY PREPARED IN THE CAR, COACH,  
ON TRAINS, AEROPLANES, SHIPS, IN SHOPPING MALLS,  
IN PARKS AND AT BEACHES, IN FACT ANYWHERE.**

**NO MORE A NEED TO:**

**PRE-MEASURE OUTDOOR FEEDS IN PLASTIC BOXES**

**HANDLE DAMP REMNANT OF PRE-MEASURED POWDER**

**LET THEBABY SUFFER AWFUL PLASTIC SMELL IN FEEDS**

**DIG FOR SCOOPS BURIED IN THE POWDER OR RELY ON  
PLASTIC BOXES WITH RISK OF BPA AND CHEMICAL POISONS**



# **INVENTION FEATURE 14**

## **OTHER USEFUL APPLICATIONS**

**IN ADDITION  
THIS INVENTION HAS  
MANY OTHER USEFUL APPLICATIONS  
WHERE ACCURATE PORTION MEASUREMENT**

**IS EITHER ESSENTIAL, AS FOR**

**FOOD SUPPLEMENTS FOR DIABETICS  
GENERAL HEALTH FOOD & SUPPLEMENTS**

**OR WILL BE HELPFUL, AS FOR**

**DETERGENT POWDERS  
CEREALS AND CONDIMENTS  
POWDERED AND PARTICULATE BEVERAGES  
PLUS MANY OTHERS USES**

**DO NOT KEEP SALT IN ANY METAL CONTAINERS**

**INVENTION FEATURE 15**  
**AN EXTREMELY SIMPLE YET**  
**EXCEPTIONALLY REVOLUTIONARY INVENTION**

**THIS INVENTION IS**  
**EXTREMELY SIMPLE AND**  
**EXCEPTIONALLY REVOLUTIONARY**

**NONE OF ITS INNOVATIVE FEATURES**  
**ARE RELIANT ON ANY**

**ELECTRONICS**  
**MECHANISED COMPONENTS**  
**ELECTRICALLY DRIVEN PARTS**  
**NOR A NEED FOR ROUTINE MAINTENANCE**

**IT'S EASY TO CLEANSE AND IS DISWASHER PROOF**

**THE KEY ELEMENT IN IT IS A PURE INNOVATIVE MIND**  
**THE MORE SIMPLE IT IS, THE MORE DIFFICULT TO INVENT**

**INVENTION FEATURE 16**  
**IT IS ALSO LEFT- HANDED USER FRIENDLY**

**ALL THE**  
**INNOVATION FEATURES**  
**IN THIS INVENTION ARE ALSO**  
**LEFT HAND USER-FRIENDLY**

**ADEQUATE CONSIDERATIONS**  
**HAVE BEEN GIVEN IN ITS DESIGN**  
**FOR THE BENEFIT OF EVERYONE**

**THIS INVENTION SERVES**  
**THE NEEDS OF EVERYONE**

# **INVENTION FEATURE 17**

**IT ALSO SERVES AS AN EDUCATIONAL AID**

**THE OVERALL MAKINGS  
OF THIS TEECY™ INVENTION  
TOGETHER WITH THE EDUCATIONAL  
INFORMATION SET OUT IN ITS WEBSITE**

**WILL CONTRIBUTE TOWARDS  
EDUCATING PARENTS WORLDWIDE ON  
PROPER FORMULA POWDER MANAGEMENT  
AND FORMULA FEED PREPARATION**

**FOR THE SAFER WELLBEING  
OF INFANTS AROUND THE WORLD**

**THIS IS AN IMPORTANT GOAL OF THIS INVENTION**

**INVENTION FEATURE 18**  
**THE ERGONOMICS OF THE INVENTION**  
**IMPROVES THE QUALITY OF LIFE**

**THE ERGONOMICS OF**  
**THIS TEECY™ INVENTION IMPROVES**  
**THE QUALITY OF LIFE IN CHILD CARE**

**AND**

**ITS ELEGANT DESIGN MAKES IT**  
**A BEAUTIFUL SHOW-PIECE IN THE HOME**

**INVENTED WITH**  
**EIGHTEEN INNOVATIVE FEATURES**  
**LEAVING NOTHING ELSE TO BE IN THE WANT**

**NO FUSS • NO MESS • NO STRESS**

**PROUDLY A FIRST IN THE WORLD**



**NO FUSS**



**NO MESS**



**NO STRESS**



**SAFE & SIMPLE**



**EVEN A CHILD CAN MANAGE**

# **ABOUT THE INVENTOR**

**INVENTOR T.C. LEO**

**A MEMBER OF  
MENSA INTERNATIONAL**

**ENDOWED WITH AN IQ OF 164**  
[OF 99.9999 PERCENTILE]

**RARITY**  
**10 IN 1,007,300**

**THE MIND BEHIND THIS INVENTION**

[www.iqcomparisonsite.com/IQtable.aspx](http://www.iqcomparisonsite.com/IQtable.aspx)



**BUY A COMBO SET  
FOR YOUR FAMILY TODAY**

**GIVE YOUR CHILD THIS LOVING CARE  
FOR SAFER FEEDS AND SAFER WELLBEING**

**ITS ERGONOMICS  
WILL ALSO IMPROVE  
THE FAMILY'S QUALITY OF LIFE  
IN CHILD CARE**

**AVAILABLE EXCLUSIVELY  
ON-LINE ONLY**

**VISIT OUR E-SHOP TO BUY**

**[www.teecy.com](http://www.teecy.com)**

# END OF OUR PRESENTATION



[www.teecy.com](http://www.teecy.com)

**A PATENTED TECHNOLOGY  
COPYRIGHT © 2012 TEECY INTERNATIONAL INC. ALL RIGHTS RESERVED**